

# clinell®

## Touch-free Hand Disinfection

Free-standing kit

SET UP  
GUIDE



# Set up guide

---

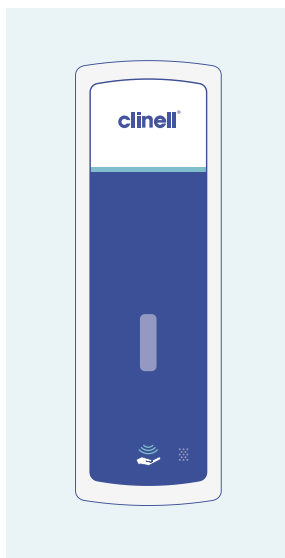
## Carton contents

1. Box containing Clinell display stand parts
2. Box containing Clinell dispenser unit parts (including dispenser key)
3. 4 x D batteries
4. Drip tray (optional use)

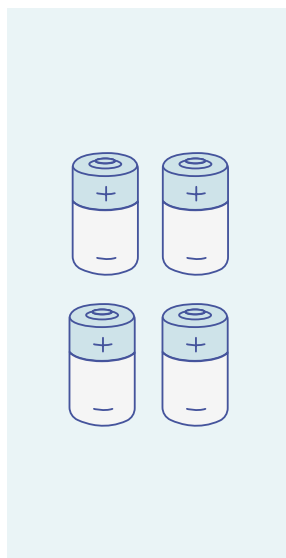
Please disregard rawl plugs for free-standing unit assembly



Display Stand



Dispenser



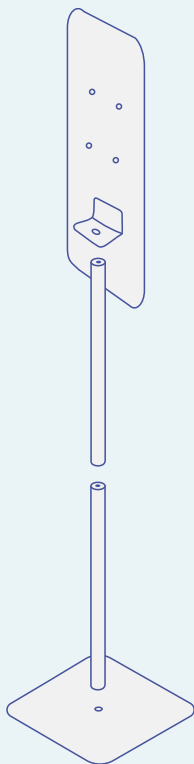
Batteries

# Step one

---

## Assembling the stand

- Unpack the Clinell display stand box contents.
- Follow the step-by-step instruction leaflet found inside the stand parts box.
- Dispose of packaging as per local regulations.

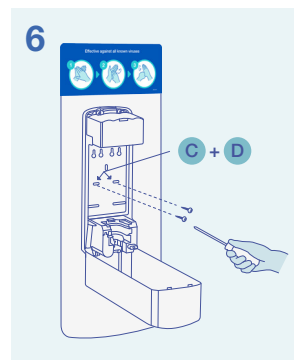
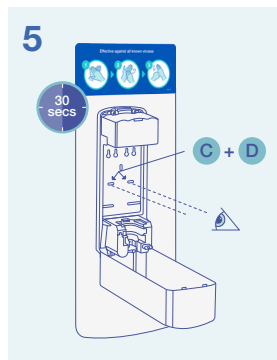
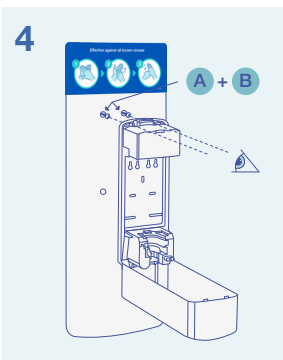
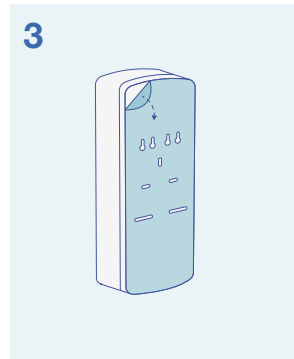
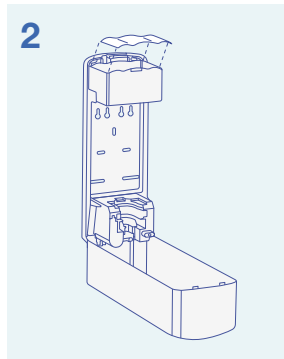
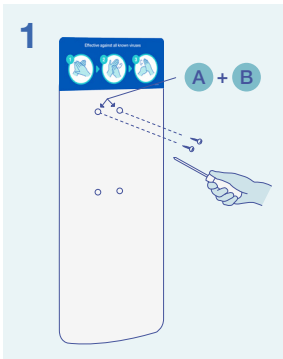


# Step two

## Mounting the dispenser onto the stand

Unpack Clinell dispenser box contents and locate screws from the stand box contents.

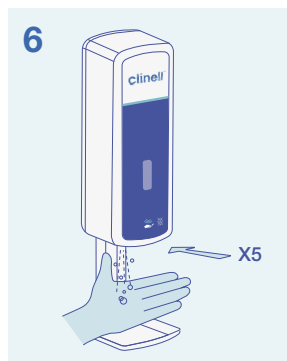
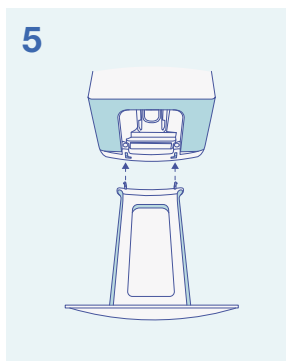
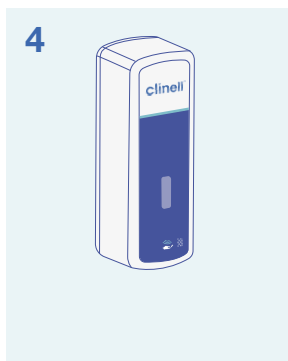
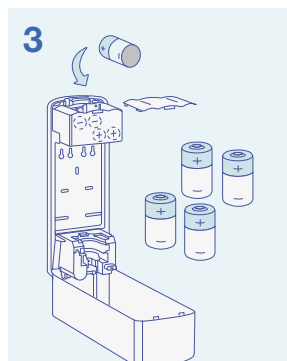
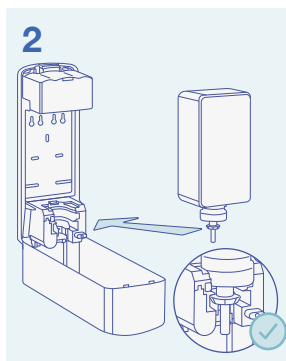
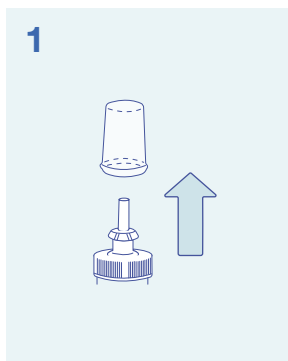
1. Loosely screw 2 x G screws into holes A & B.
2. Ensure battery cover is removed from dispenser unit.
3. Unpeel adhesive film from back of dispenser unit.
4. Carefully hook the open dispenser unit onto screws in holes A & B, ensuring unit doesn't stick to backplate.
5. Line up holes C & D with holes in backplate and press unit firmly in position for 30 seconds.
6. Insert 2 x G screws into holes C & D, and screw all four screws securely through dispenser unit to backplate.
7. Dispose of all packaging as per local regulations.



# Step three

## Dispenser set-up

1. Remove cap from gel refill cartridge by pulling the cap firmly.
2. Turn cartridge upside down, ensuring label is facing towards the back of the dispenser unit and click into place.
3. Insert 4 x D batteries and replace battery cover.
4. Close dispenser unit and click shut.
5. Line up drip tray clips and press in the left side, followed by the right side until firmly locked into position.
6. Place hand under dispenser unit multiple times to activate gel (green light signifies unit is in operation).





Effective against all known viruses



clinell  
Hand Disinfection



KILLS AT LEAST 99.99%  
OF BACTERIA & VIRUSES

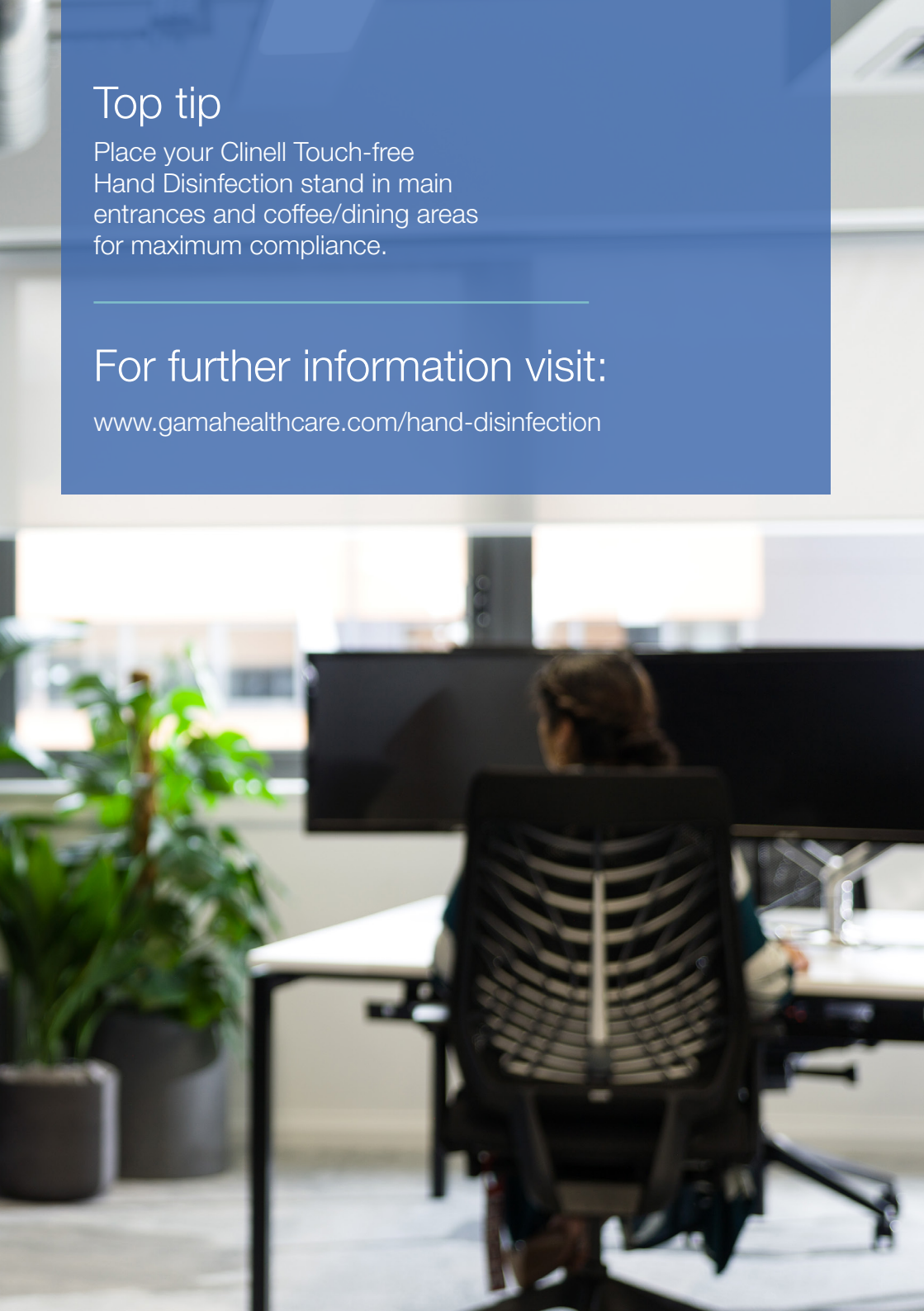
## Top tip

Place your Clinell Touch-free Hand Disinfection stand in main entrances and coffee/dining areas for maximum compliance.

---

## For further information visit:

[www.gamahealthcare.com/hand-disinfection](http://www.gamahealthcare.com/hand-disinfection)



JBN210488

---

**GAMA Healthcare Ltd.,**

The Maylands Building, Maylands Avenue, Hemel Hempstead, Hertfordshire, HP2 7TG, UK.  
T: +44 (0)20 7993 0030 E: [info@gamahealthcare.com](mailto:info@gamahealthcare.com) W: [www.gamahealthcare.com](http://www.gamahealthcare.com)

